

**TEA FOR TWO**  
**DESIGN, TEXT AND GRAPHICS BY:**  
**PAUL C. RICKS, copyright 2014**  
**DIFFICULTY LEVEL: Beginner**



This classy bracelet is perfect for that fancy party night or even for work wear. It's quick and easy to make up and will really stand out with any outfit.

**Material List:** Delica Beads, Opaque Black (DB010); Delica Beads, Silver Lined Gold (DB042); Two Miyuki Slide Tubes, gold color, 20mm; One Lobster Claw clasp, gold color; Three split rings, gold color; One spool black KO thread; One 2" #10 beading needle. NOTE: all supplies are contained in this kit.

**Step 1:** This project is 15 beads wide, so warp your Ricks Beading Loom with 16 warps. For more detailed instruction with this step, see the booklet "The Ricks Beading Loom" or the instructions that came with your Ricks Beading Loom.

**Step 2:** Loom the graph on the following page. Note: When determining the length of your project you may have to add additional plain black rows to each end in order to center the design area. When you reach the bottom of the first graph, go to the top of the second.

### Tea for Two Graph



**Step 3, Attaching Clasp:** We are using the 20 mm Miyuki slide tubes to attach our clasp to this project. See Figure 3a below:

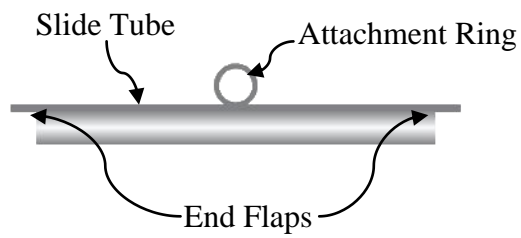


Figure 3a

Bend one of the end flaps down to close one end of the tube. (Tip: a pair of chain nose pliers comes in handy for this.) See Figure 3b below:



Figure 3b

Insert the last row of your completed project into slot in the bottom of the tube. See Figure 3c below:

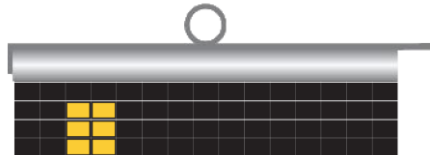


Figure 3c

Bend the other flap down to close that end of the tube also. See Figure 3d below:

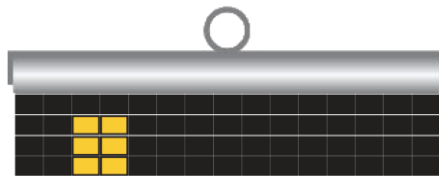


Figure 3d

**Step 4:** Using a split ring, attach the Lobster Claw portion of your clasp to the attachment ring on the slide tube.

**Step 5:** Repeat steps 3 & 4 for the other end of your project, except on the step four portion attach two split rings together and attach one of them to the attachment ring.

ENJOY!